



CHICAGO **ATLANTIC**  
CHICAGO ATLANTIC BDC, INC.

# First Quarter 2026 Earnings Presentation

Chicago Atlantic BDC, Inc. (NASDAQ: LIEN)

May 14, 2026

# Disclaimers and Forward-Looking Statements



The information contained in this presentation should be viewed in conjunction with the earnings conference call of Chicago Atlantic BDC, Inc. (the “Company”) (Nasdaq: LIEN) held on May 14, 2026, and the Company’s Quarterly Report on Form 10-Q for the quarter ended March 31, 2026. The information contained herein may not be used, reproduced or distributed to others, in whole or in part, for any other purpose without the prior written consent of the Company.

This presentation does not constitute a prospectus and should under no circumstances be understood as an offer to sell or the solicitation of an offer to buy the Company’s common stock or any other securities nor will there be any sale of the common stock or any other securities referred to in this presentation in any state or jurisdiction in which such offer, solicitation or sale would be unlawful prior to the registration or qualification under the securities laws of such state or jurisdiction.

Nothing in these materials should be construed as a recommendation to invest in any securities that may be issued by the Company or as legal, accounting or tax advice. An investment in securities of the type described herein presents certain risks. Nothing contained herein shall be relied upon as a promise or representation whether as to the past or future performance. Information regarding performance by the Company’s management team and their affiliates is presented for informational purposes only. You should not rely on the historical record of the Company’s management team and their affiliates as indicative of the future performance of an investment in the Company or the returns the Company will, or is likely to, generate going forward.

Certain information contained herein has been derived from sources prepared by third parties. While such information is believed to be reliable for the purposes used herein, the Company makes no representation or warranty with respect to the accuracy of such information. This presentation contains references to trademarks and service marks belonging to other entities. Solely for convenience, trademarks and trade names referred to in this presentation may appear without the ® or ™ symbols, but such references are not intended to indicate, in any way, that the applicable licensor will not assert, to the fullest extent under applicable law, its rights to these trademarks and trade names. The Company does not intend its use or display of other companies’ trade names, trademarks or service marks to imply a relationship with, or endorsement or sponsorship of the Company by, any other companies.

The information contained in this presentation is summary information that is intended to be considered in the context of other public announcements that the Company may make, by press release or otherwise, from time to time. The Company undertakes no duty or obligation to publicly update or revise the information contained in this presentation, except as required by law. These materials contain information about the Company, certain of its personnel and affiliates and its historical performance. You should not view information related to the past performance of the Company as indicative of the Company’s future results, the achievement of which cannot be assured.

**Past performance does not guarantee future results, which may vary. The value of investments and the income derived from investments will fluctuate and can go down as well as up. A loss of principal may occur.**

Certain information contained herein may constitute “forward-looking statements” that involve substantial risks and uncertainties. Such statements involve known and unknown risks, uncertainties and other factors and undue reliance should not be placed thereon. These forward-looking statements are not historical facts, but rather are based on current expectations, estimates and projections about the Company, its current and prospective portfolio investments, its industry, its beliefs and opinions, and its assumptions. Words such as “anticipates,” “expects,” “intends,” “plans,” “will,” “may,” “continue,” “believes,” “seeks,” “estimates,” “would,” “could,” “should,” “targets,” “projects,” “outlook,” “potential,” “predicts” and variations of these words and similar expressions are intended to identify forward-looking statements. These statements are not guarantees of future performance and are subject to risks, uncertainties and other factors, some of which are beyond the Company’s control and difficult to predict and could cause actual results to differ materially from those expressed or forecasted in the forward-looking statements including, without limitation, the risks, uncertainties and other factors identified in the Company’s filings with the Securities and Exchange Commission (the “SEC”). Investors should not place undue reliance on these forward-looking statements, which apply only as of the date on which the Company makes them. The Company does not undertake any obligation to update or revise any forward-looking statements or any other information contained herein, except as required by applicable law.

# Chicago Atlantic BDC, Inc

## Company & Platform Overview



**\$3.8B+**

in loans closed since platform inception<sup>(1)</sup>

**195+**

loans closed across platform<sup>(1)</sup>

**~\$810M**

near-term pipeline under evaluation<sup>(2)</sup>

**\$364M**

total portfolio investment value

**100%**

of current company debt investments are senior secured

**15.8%**

gross weighted-average yield of Company debt investments <sup>(3)</sup>

- Chicago Atlantic BDC, Inc. (NASDAQ: LIEN) (the “Company” or “us”) is externally managed by Chicago Atlantic BDC Advisers, LLC (the “Adviser”)
- The Adviser, a majority-owned subsidiary of Chicago Atlantic Group, LP (together with its affiliates, “Chicago Atlantic”), is an SEC-registered investment adviser and works with its clients to originate, underwrite and deploy primarily first-lien, senior-secured fixed and floating rate debt primarily to the cannabis industry’s most established operators and to other niche companies overlooked by the broader market
- The Adviser focuses on opportunities that are time-sensitive, highly complex or in dislocated sectors where risk is fundamentally mispriced with attractive risk-adjusted returns
- Seasoned investment team with decades of multi-sector experience across market cycles and complex legal and regulatory frameworks in credit, special situations, equities, distressed and emerging market debt
- Access to Chicago Atlantic’s leading lending platform which typically serves as lead or co-lead arranger, and its proprietary sourcing network and direct originations team

1. Includes all closed loans across the Chicago Atlantic platform.

2. Includes potential funding opportunities for new originations and refinancing of existing assets as of 3/31/2026

3. As of 3/31/26; see page 22 for information regarding the calculation of Gross Weighted Average Portfolio Yield on Debt Investments (“Portfolio Yield”) and Total Portfolio Investment Value.

# Investment Highlights



## A DIFFERENTIATED BDC

- Strong credit metrics
- The first public BDC primarily focused on the cannabis industry
- All debt investments are senior secured
- 94% of the debt portfolio is protected from further interest rate declines
- Ample liquidity remains in our senior secured revolving credit facility, providing us runway for portfolio growth
- Part of a leading cannabis focused investment platform

## FOCUS ON UNDERSERVED SECTORS

- Focus on highly complex and highly regulated industries often overlooked by other capital providers
- Direct lending to the cannabis industry and the lower middle-market, secured by a diverse collateral base
- Investing in underserved market niches creates pricing power, enhances downside protections, and creates a durable competitive moat

## SEEKING TO DELIVER A DIVERSIFIED SOURCE OF CREDIT ALPHA

- Uncorrelated, idiosyncratic credit opportunity in cannabis and the lower middle-market
- Limited exposure to sponsor-backed, middle-market transactions, a crowded space where BDCs and private credit funds tend to focus
- Investing where few capital providers with requisite expertise are present

# Experienced Credit & Cannabis Leadership Team



**Peter Sack**  
CEO



- Former Principal at BC Partners Credit, leading its cannabis practice
- Former private equity investor, focusing on distressed industrial opportunities
- MBA from University of Pennsylvania's Wharton School of Business, BA from Yale University, and Fulbright Scholar

**Scott Gordon**  
Executive Chairman  
& Co-CIO



- Over 30 years of investing and asset management experience in emerging markets
- Former Founding Partner, CEO and CIO of Silver Spike Capital, Former President of Fintech Advisory, a multi-billion dollar Family Office fund
- Investor in the cannabis & psychedelics industry since 2013
- BA Bowdoin College

**Umesh Mahajan**  
Co-CIO &  
Secretary



- 28-year career in various middle-market, credit and special situations investing
- Former Co-head of Credit and Partner at Silver Spike Capital, Former Managing Director at Ascribe Capital and led various roles at Merrill Lynch and Bank of America
- MBA from University of Pennsylvania's Wharton School of Business and Btech, Indian Institute of Technology

**Dino Colonna, CFA**  
President



- 23-year career in various credit, derivatives and equity investments as well as investment banking across global capital markets
- Former Co-head of Credit and Partner at Silver Spike Capital, and held various roles at Madison Capital Advisors, Barclays and Forest Investment Management
- MBA from ESADE, BSBA from the University of Delaware

**Thomas Geoffroy**  
Interim Chief  
Financial Officer



- 20 years of accounting and finance experience
- Former CFO of a NASDAQ listed mortgage REIT
- Licensed Certified Public Accountant
- BS from the University of Missouri – St. Louis, Magna Cum Laude

**Andrew Lovitt**  
Chief Compliance  
Officer



- Previously an attorney in the Private Credit group at Katten Muchin Rosenman LLP
- Has advised lenders and borrowers in numerous finance transactions, including cash flow and asset-based transactions, leverage buyouts, refinancings & repayments
- JD from the University of Pennsylvania and BA from Purdue University

**Gianni Fazio**  
Chief Accounting  
Officer



- Previously a Venture Associate at Adit Ventures where he managed the operations and financial reporting of early & late-stage venture funds.
- Licensed Certified Public Accountant
- BS & MS, Long Island University

**A SEASONED TEAM WITH  
DECADES OF EXPERIENCE  
ACROSS CREDIT,  
CANNABIS, AND CAPITAL  
MARKETS**

# About CHICAGO ATLANTIC



**INCEPTION** A private credit-focused investment firm founded in 2018

**SIZE** Capital under management: over \$2.3B<sup>1</sup>

**TEAM** 100+ professionals, including over 35 investment professionals

**INVESTMENT PRINCIPLES** Seeking attractive risk-adjusted returns, preservation of capital and income generation predominantly through investment opportunities that are overlooked or underserved by conventional capital sources

**LOCATIONS** Chicago, Miami, New York, London

1. Capital under management represents total committed investor capital, total available leverage including undrawn capital, and capital invested by co-investors and managed by the firm, as of 3/31/2026.

# Core Strategy

Chicago Atlantic focuses on senior-secured lending in the top of the capital structure to the lower middle-market and middle-market. The platform's primary investment verticals include cannabis, growth and technology finance, loans to esoteric industries / asset-based loans, and liquidity solutions.



## INVESTMENT STRATEGY

- ✓ Seek above market returns and the preservation of capital
- ✓ Capitalize on opportunities across industries that are created by complexity or the lack of investor focus
- ✓ Invest and lend in underserved market niches
- ✓ Focus on smaller deal sizes with less competition and potentially better relative risk/reward compared to other direct lenders that typically target larger transactions with higher leverage and less covenants

## DIFFERENTIATORS

- ✓ Ability to underwrite highly complex industries
- ✓ Extensive origination network
- ✓ Top of the capital structure lending is risk mitigating
- ✓ Prioritize preservation of capital
- ✓ Low correlation to other asset classes and other private credit more broadly
- ✓ Floating-rate loans with high-interest rate floors
- ✓ 85% of loans are agented internally
- ✓ Minimal overlap with investments made by other public BDCs

# Financial Highlights



	Quarter Ended March 31, 2026	Quarter Ended December 31, 2025
GROSS INVESTMENT INCOME	\$ 16.7 million	\$14.2 million
NET EXPENSES	\$6.7 million	\$5.9 million
NET INVESTMENT INCOME	\$10.0 million	\$8.3 million
NET ASSETS AT END OF PERIOD	\$304.2 million	\$303.4 million
WEIGHTED AVERAGE SHARES OUTSTANDING <sup>1</sup>	22.8 million	22.8 million
<b><u>PER SHARE DATA:</u></b>		
NET INVESTMENT INCOME	\$ 0.44	\$ 0.36
NET ASSET VALUE AT END OF PERIOD	\$ 13.33	\$ 13.30

1. The common shares issued and outstanding as of 3/31/2026 and 12/31/2025 were 22,820,590 and 22,820,590, respectively

# Investment Portfolio Highlights



## CHICAGO ATLANTIC BDC INC. PORTFOLIO AS OF 3/31/26

NET ASSET VALUE (INCLUDING CASH)	\$304.2mm
INVESTMENTS AT FAIR VALUE	\$364.0mm
NUMBER OF PORTFOLIO COMPANIES	40
GROSS WEIGHTED AVERAGE YIELD OF DEBT INVESTMENTS <sup>1</sup>	15.8%
INTERNALLY AGENTED DEALS (% OF PORTFOLIO COMPANIES)	85.0%
NON-ACCRUALS AT COST (%)	0.0%
AVERAGE POSITION SIZE	\$8.4mm (2.3% of investments, at fair value)
PIK INTEREST (% OF TOTAL ANNUAL INTEREST) / POST-ORIGINATION PIK <sup>2</sup>	8.3% / 0.0%*
<b><u>PORTFOLIO COMPANIES KEY FINANCIAL AND CREDIT METRICS<sup>3</sup></u></b>	
REVENUE (MEDIAN)	\$89.9mm
EBITDA (MEDIAN) <sup>4</sup>	\$9.8mm
SR. SECURED NET DEBT / EBITDA (WEIGHTED AVERAGE) <sup>4</sup>	2.2x
INTEREST COVERAGE (WEIGHTED AVERAGE) <sup>4</sup>	2.9x

Based on data as of 3/31/2026, unless otherwise noted. Weighted average amounts are weighted by the fair market value of each respective investment.

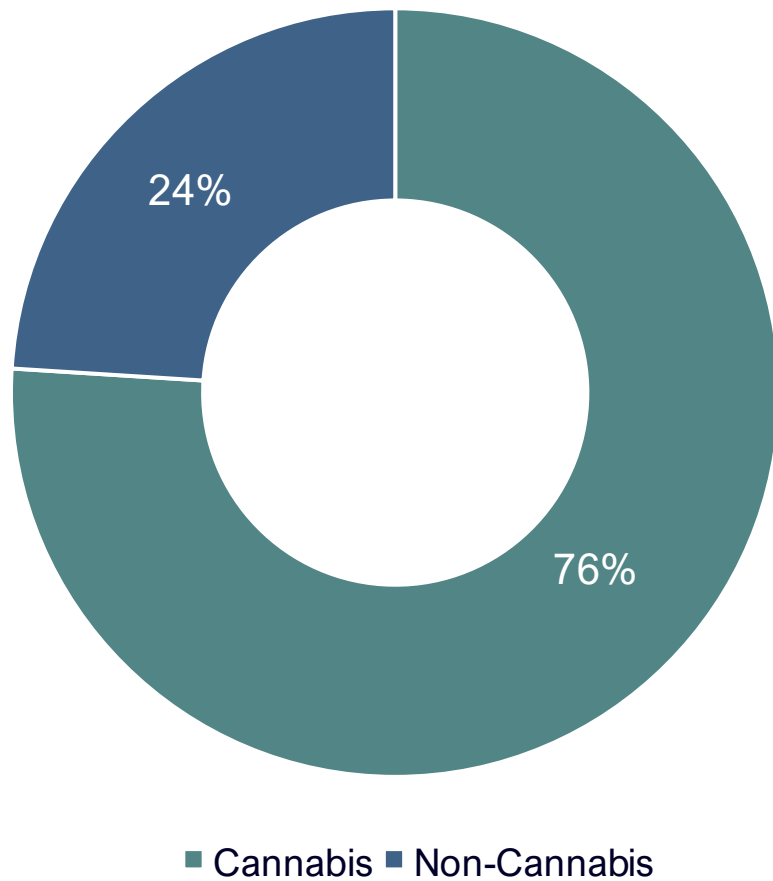
See page 22 in the appendix for footnote legend.

\*less than 0.01%

# Portfolio Composition

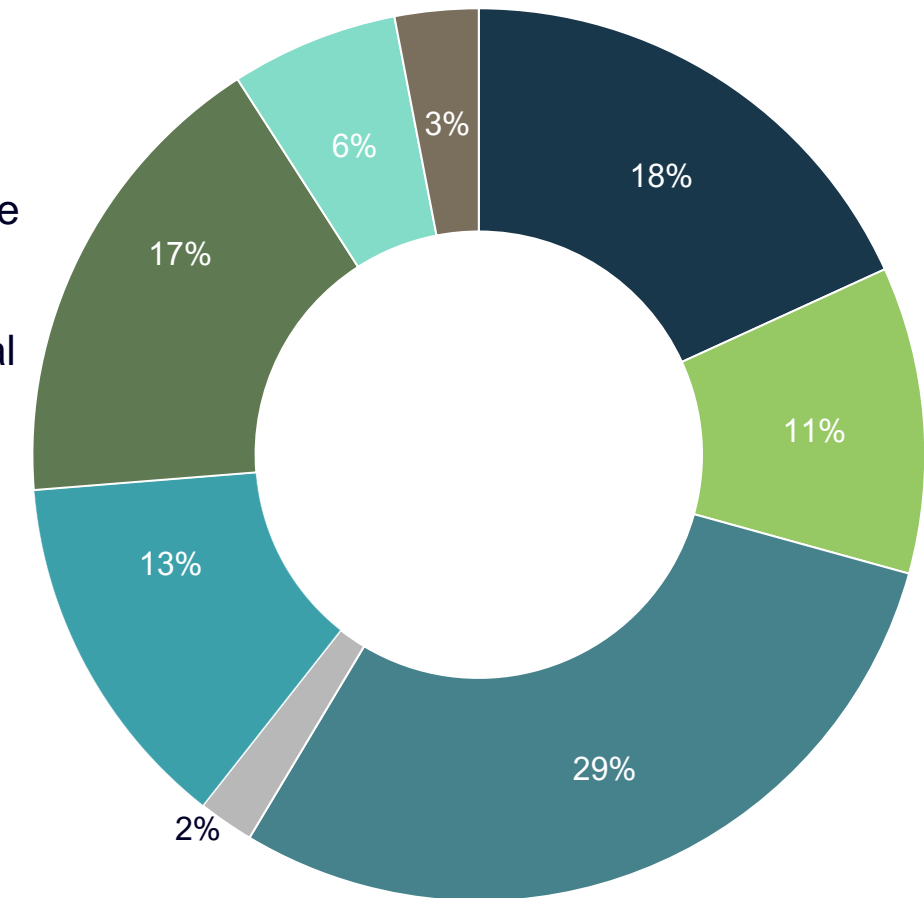


## PORTFOLIO DIVERSIFICATION<sup>1</sup>



## NON-CANNABIS BY INDUSTRY

- Information
- Retail Trade
- Finance and Insurance
- Real Estate and Rental and Leasing
- Public Administration
- Manufacturing
- Educational Services
- Admin & Waste Mgmt Services

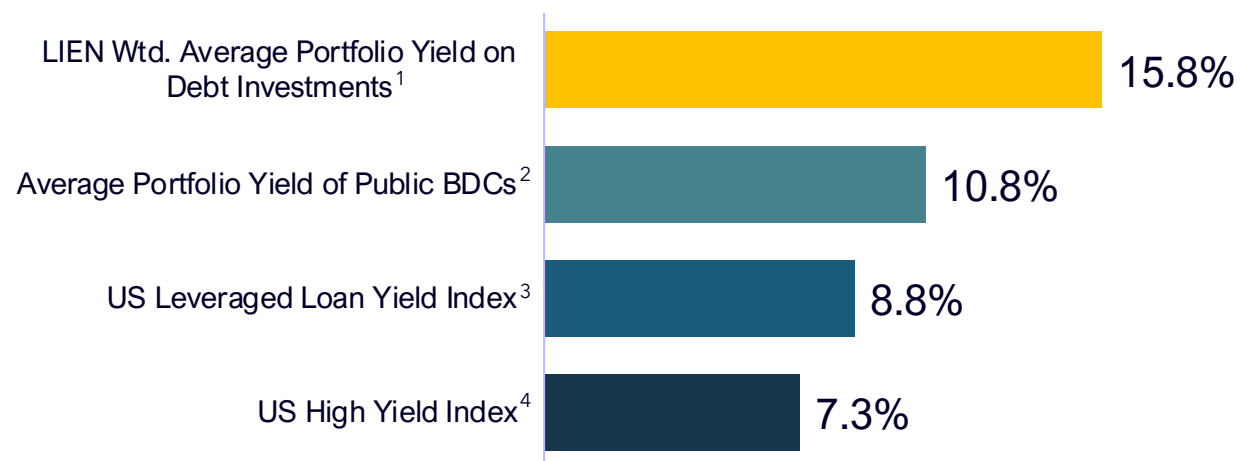


1. Calculated as a percentage of the total fair value of the Company's investment portfolio (excluding cash and cash equivalents). Industries follow NAICS categorizations.

# A Differentiated Investment Portfolio



## Chicago Atlantic BDC, Inc. Offers a Significant Premium to Public BDCs and Traditional Leveraged Finance



**Chicago Atlantic BDC (Nasdaq: LIEN) generated a 15.8% weighted average portfolio yield on debt investments:**

- Investing in market niches underserved by traditional lenders drives **pricing power**, enables **downside protections** and a durable competitive moat
- **Attractive risk-adjusted returns** driven by disciplined underwriting and focus on **senior secured loans**.
- **Complex regulatory and/or legal barriers** deter traditional capital providers, creating **compelling opportunities** for experienced lenders.
- **Credit alpha** driven by uncorrelated, idiosyncratic credit opportunities that typically have higher returns with lower leverage profiles compared to most traditional BDC's.

	Dividend Yield	GAAP Leverage Ratio	Non-Accruals At Cost	Total 2nd Lien, Sub & Equity Exposure
<b>BDC Universe<sup>(5)</sup></b>				
<i>Average</i>	13.5%	126.3%	3.4%	25.5%
<i>Median</i>	13.7%	125.0%	2.7%	23.0%
<b>LIEN as of 3.31.2026</b>	14.6%	17.9%	0.0%	1.3%

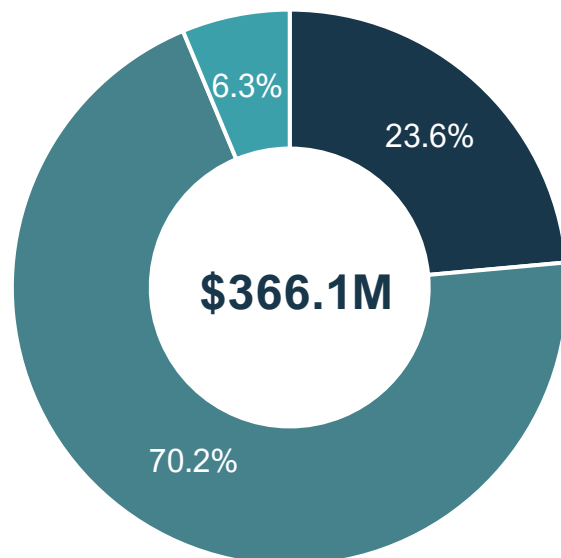
1. As of 3/31/26; see pages 9 & 22 for information regarding the calculation of Weighted Average Portfolio Yield on Debt Investments ("Portfolio Yield")  
 2. BDC Weekly Insight, Raymond James published 5/1/2026  
 3. LSTA US Leveraged Loan Index as of 3/31/2026  
 4. ICE BoA US High Yield Index Effective Yield as of 3/31/2026  
 5. BDC Quarterly Report, Oppenheimer & Co. Inc. published 3/27/2026

# Limited Downside from Interest Rate Changes



## Focus on Mitigating Downside Interest Rate Risk

**BY RATE TYPE<sup>(1)</sup>**



- Fixed-rate
- Floating-rate (at Floor)
- Floating-rate (not at Floor)

- 94% of the debt portfolio consists of fixed-rate or floating-rate loans at their contractual floors, providing meaningful downside protection in a declining rate environment
- The debt portfolio is protected on the downside from a hypothetical change in interest rates, with convexity on the upside. See table to the right for estimated change in annualized total investment income based on the current debt portfolio

**INTEREST INCOME SENSITIVITY<sup>(2)</sup>**

Bps change in Benchmark Interest Rates	Estimated Change in Total Interest Income (\$ in 000s)
300	\$7,233
200	\$4,434
100	\$1,850
(100)	(\$82)
(200)	(\$82)
(300)	(\$82)

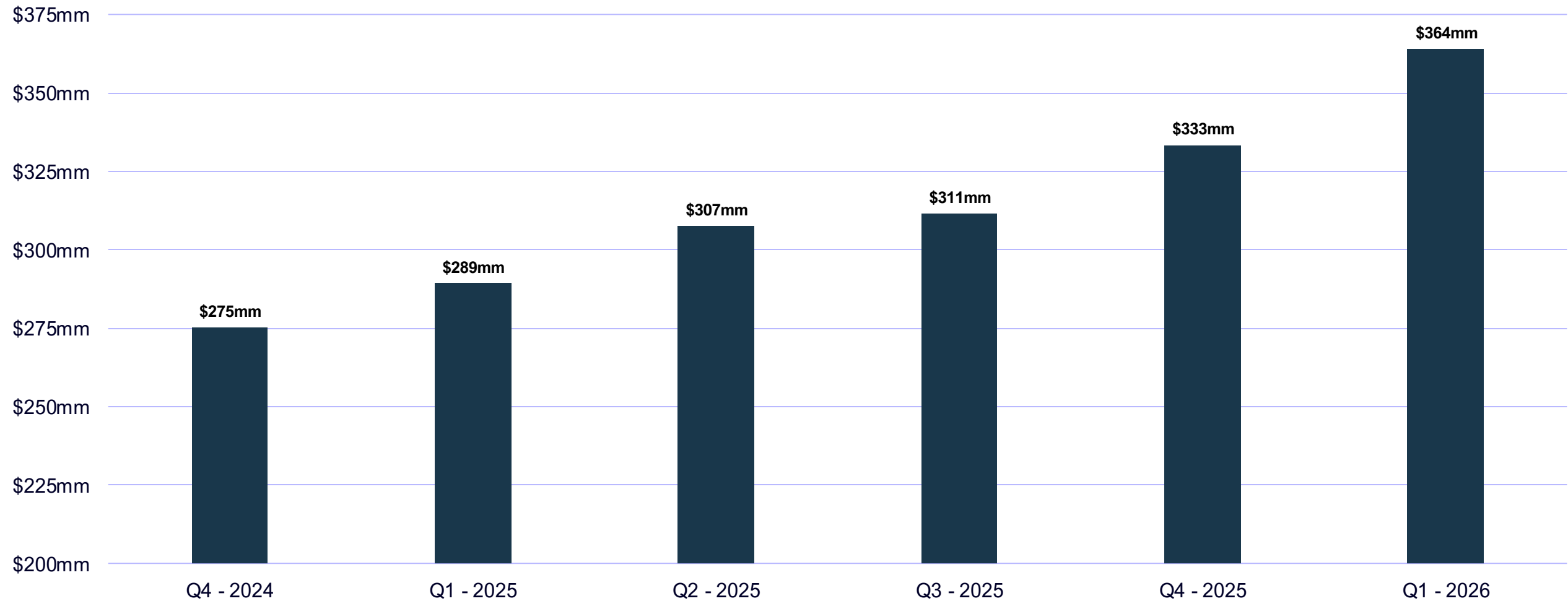
1. Based on principal outstanding as of 3/31/2026, approximately \$149.7 million (40.9%) and \$130.2 million (35.5%) of total outstanding principal bears interest based on the Prime Rate and Secured Overnight Financing Rate ("SOFR"), respectively.

2. Represents the change in interest income based upon the portfolio composition as of 3/31/2026, using a range of + 300 bps to – 300 bps of changes to the benchmark index rate. Estimated impacts presented include floating rate loans indexed to both the U.S prime rate and SOFR.

# Fair Market Value of Investment Portfolio

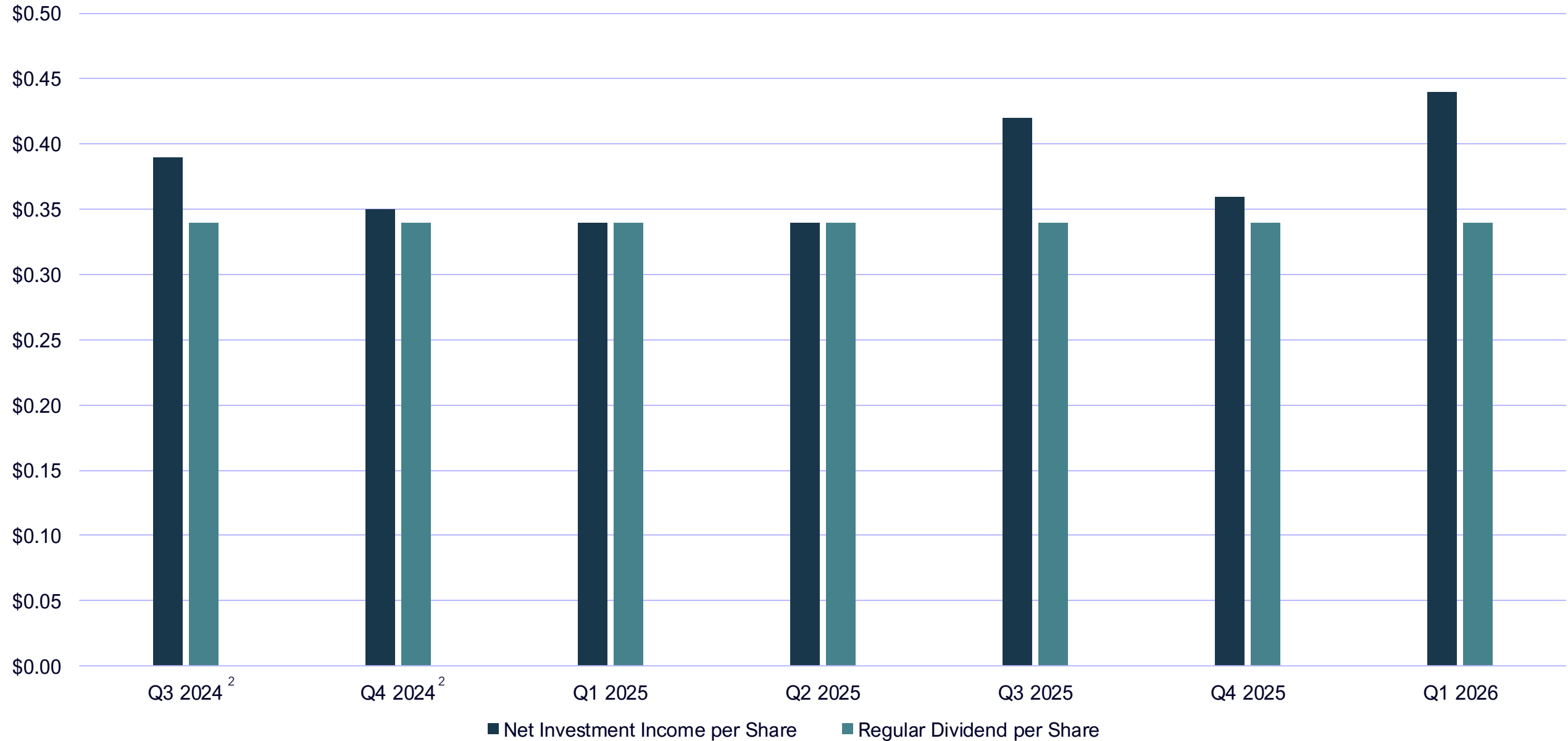


## Growth in the FMV of the Investment Portfolio





# Net Investment Income and Dividends<sup>1</sup>



1. Net investment income per share based on basic weighted average common shares outstanding at the end of each respective quarter.

2. Q3 2024 and Q4 2024 NII per share excludes Loan Portfolio Acquisition Expenses



# Target Borrowers

## Investment Sub-Strategies

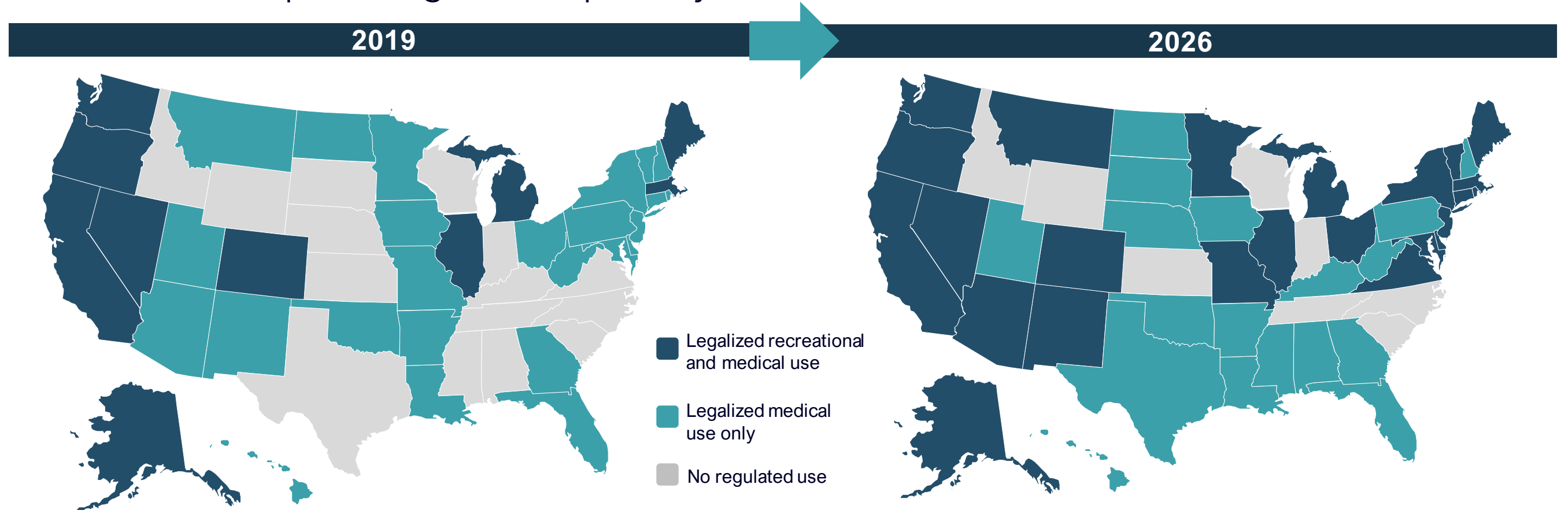
Although our primary investment focus has been in the cannabis industry, sub-strategies of our principal investment strategy may also consist of growth and technology companies, esoteric and asset-based lending opportunities, and companies in need of liquidity solutions. We are not required to have a minimum investment in any of these sub-strategies.

CANNABIS LENDING	GROWTH & TECHNOLOGY	ESOTERIC & ASSET-BASED LENDING	LIQUIDITY SOLUTIONS
<ul style="list-style-type: none"><li>➤ Growth or EBITDA positive entities</li><li>➤ Companies that require capital but do not want to dilute their equity</li><li>➤ Companies that are showing strong cash flow performance with low leverage profiles</li><li>➤ Transactions tend to be attractively priced and have better than normal covenants and amortization due to complexity of the industry</li><li>➤ Low debt to enterprise value</li></ul>	<ul style="list-style-type: none"><li>➤ Industry leaders and disruptive companies experiencing strong growth</li><li>➤ Companies that have raised significant equity capital validating market value</li><li>➤ Industry focus typically includes software, hardware, E-commerce and direct to consumer</li><li>➤ Liquidity covenants that ensure such company has adequate cash runway</li><li>➤ Low debt to enterprise value</li><li>➤ Profitable or demonstrated path to near term profitability</li></ul>	<ul style="list-style-type: none"><li>➤ Structured credit and asset-based loans, receivables pools, and equipment</li><li>➤ Companies that are showing strong cash flow performance with low leverage profiles, but the industries carry regulatory, reputational or other risks</li><li>➤ Transactions tend to be attractively priced and have better than normal covenants and amortization due to complexity of the industry or situation</li><li>➤ Low debt to asset values and/or enterprise values</li></ul>	<ul style="list-style-type: none"><li>➤ Financing is typically event driven</li><li>➤ Companies that are pursuing a merger, acquisition, refinancing, dividend recap, or other strategic liquidity need</li><li>➤ Companies that are showing strong cash flow performance with low leverage profiles</li><li>➤ Companies that have multiple areas of value and liquidity in addition to the underlying business</li><li>➤ Low debt to enterprise value</li><li>➤ Industry agnostic</li></ul>



# The Cannabis Landscape in the U.S.

## How the landscape changed over past 7 years



- ✓ Legal in **36 states** and the **District of Columbia**<sup>1</sup>
  - ✓ **Medical use only: 26 states**
  - ✓ **Recreational/Medical use: 10 states & District of Columbia**

- ✓ Legal in **42 states** and the **District of Columbia**<sup>2</sup>
  - ✓ **Medical use only: 18 states**
  - ✓ **Recreational/Medical use: 24 states & District of Columbia**

1 – MJBiz <https://mjbizdaily.com/map-of-us-marijuana-legalization-by-state/>

2 – MJBiz Factbook Q1 2026



# The Cannabis Landscape in the U.S.

## Where We See Opportunities

### LACK OF TRADITIONAL FINANCING

Banks generally don't lend to firms in this industry, allowing higher interest rates, attractive collateral, and lender-friendly covenants.

### HIGH BARRIERS TO ENTRY

Each state has unique investment characteristics, supply and demand dynamics, and legal frameworks, requiring sophisticated understanding of the industry and strong underwriting expertise.

### LOW CORRELATIONS TO TRADITIONAL MARKETS

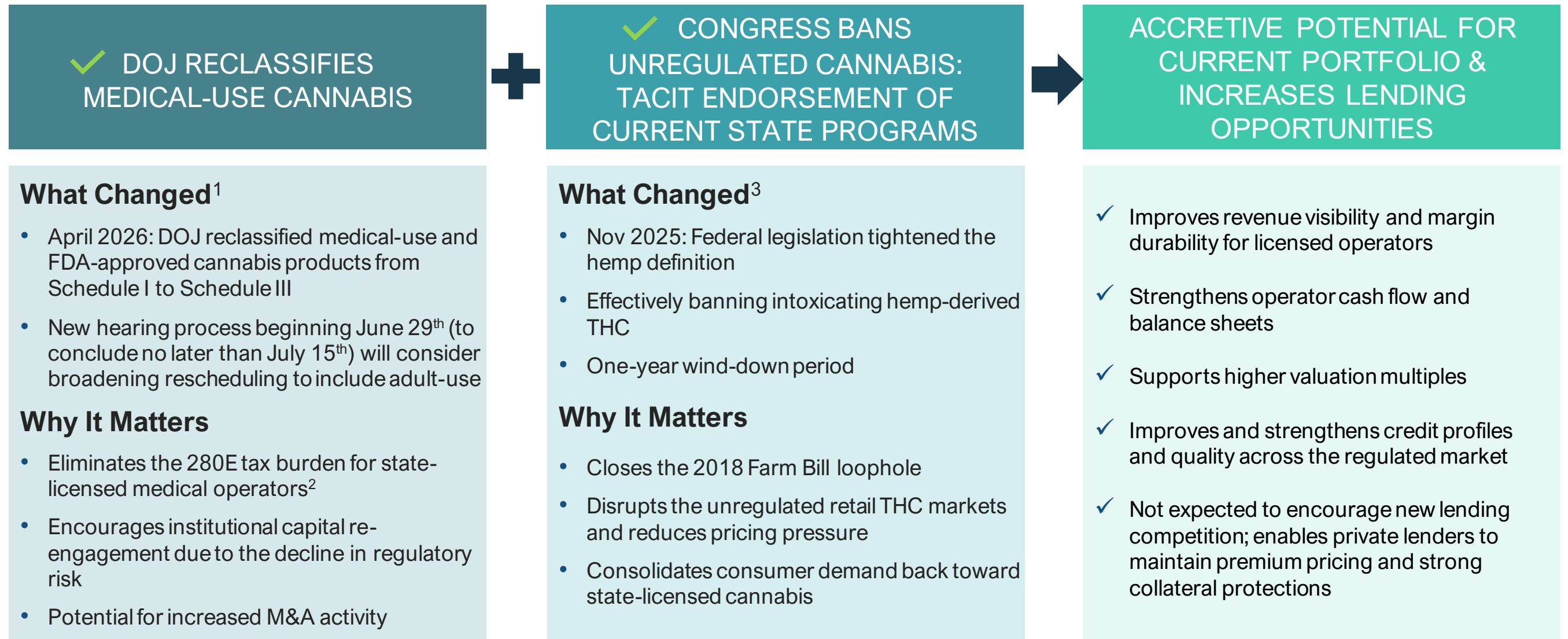
Medical cannabis behaves like pharmaceuticals, recreational cannabis behaves like tobacco and alcohol, both exhibiting low correlation with traditional markets.

### FOCUS ON LIMITED LICENSE STATES

Limited license states have limited competition, lucrative license values, high wholesale prices, and less black-market presence.

WE FOLLOW ALPHA  
INTO INDUSTRIES WITH  
LIMITED COMPETITION

# Federal Cannabis Policy Updates: Shift in Regulatory Reform



Chicago Atlantic makes no guarantee of future outcomes. Please refer to Projections and Forward-Looking Statements disclosure at the end of this presentation.

1. <https://www.dentons.com/en/insights/alerts/2026/april/23/doj-reschedules>

2. <https://www.foxrothschild.com/publications/doj-officially-reschedules-certain-cannabis>

3. <https://www.cnbc.com/2025/11/13/congress-thc-hemp-ban.html>

# Potential Benefits of Regulatory Reform



## INCREASED MARKET OPPORTUNITIES

Renewed federal momentum around cannabis reform following President Trump's December executive order and the rescheduling of medical cannabis in April '26 has revived the possibility of additional reforms and broader regulatory clarity. Further progress on recreational rescheduling could materially improve operator cash flow, expand access to capital, and reopen strategic financing opportunities across the industry.<sup>1</sup>

## ENHANCED SALES THROUGH CREDIT CARD PROCESSING

Allowing dispensaries to process credit card transactions may lead to a significant boost in sales.

## IMPROVED EQUITY VALUATIONS

As investor confidence grows, equity valuations are likely to tick higher, providing additional incentives for investment and increased credit protection.

## INCREASED ATTRACTIVENESS FOR ACQUISITION

Further legalization could create more favorable conditions and increase portfolio attractiveness for potential acquirers (such as private equity or private credit funds), while make-whole provisions and pre-payment penalties provide additional appeal.

## FAVORABLE COMPETITIVE LANDSCAPE

Significant barriers to entry, such as stringent financial requirements and industry-specific knowledge, is likely to keep the market relatively stable and prevent an inundation of competitors over the next several years.

<sup>1</sup> – <https://www.forbes.com/sites/sarahsinclair/2025/12/18/trump-signs-executive-order-to-reschedule-cannabis-heres-what-it-means/>

Appendix:  
Schedule of Investments



# Schedule of Investments (as of March 31, 2026)



Portfolio Company	Security Type	Maturity Date	Fixed vs. Floating	Floating Reference Rate	Prime/SOFR Floor	Cash Spread/Coupon	PIK Rate	Investment Value	% of Investment Value
Portfolio Company 1	First Lien Senior Secured Loans	3/11/2029	Floating	SOFR	4.00%	7.66%	n/a	\$ 38,325,000	10.53%
Portfolio Company 1	First Lien Senior Secured Loans	2/28/2029	Floating	SOFR	4.00%	8.33%	n/a	26,533,334	7.29%
Portfolio Company 2	First Lien Senior Secured Loans	9/30/2028	Floating	Prime	7.50%	8.75%	n/a	31,427,550	8.63%
Portfolio Company 3	Senior Secured Notes	10/2/2028	Fixed	Fixed	n/a	15.00%	n/a	22,000,000	6.04%
Portfolio Company 4	First Lien Senior Secured Loans	12/31/2029	Fixed	Fixed	n/a	0.00%	20.00%	17,370,481	4.77%
Portfolio Company 5	First Lien Senior Secured Loans	1/31/2031	Floating	SOFR	3.25%	6.25%	n/a	13,785,996	3.79%
Portfolio Company 5	Warrants	n/a	n/a	n/a	n/a	n/a	n/a	1,047,500	0.29%
Portfolio Company 6	First Lien Senior Secured Loans	12/31/2028	Floating	SOFR	3.72%	10.24%	n/a	14,375,400	3.95%
Portfolio Company 7	First Lien Senior Secured Loans	12/31/2027	Fixed	Fixed	n/a	11.00%	5.00%	13,734,451	3.77%
Portfolio Company 8	First Lien Senior Secured Loans	3/28/2027	Floating	Prime	8.50%	6.50%	n/a	13,474,746	3.70%
Portfolio Company 9	First Lien Senior Secured Loans	8/20/2028	Floating	Prime	7.50%	5.75%	n/a	13,403,381	3.68%
Portfolio Company 10	First Lien Senior Secured Loans	1/30/2029	Floating	Prime	6.75%	8.42%	1.50%	11,750,000	3.23%
Portfolio Company 11	First Lien Senior Secured Loans	9/18/2026	Floating	SOFR	4.00%	7.75%	n/a	11,348,647	3.12%
Portfolio Company 12	First Lien Senior Secured Loans	6/30/2028	Floating	Prime	13.25%	5.75%	n/a	10,874,400	2.99%
Portfolio Company 13	First Lien Senior Secured Loans	6/30/2028	Floating	Prime	7.00%	5.75%	n/a	9,302,019	2.56%
Portfolio Company 14	First Lien Senior Secured Loans	11/24/2028	Fixed	Fixed	n/a	12.00%	1.00%	8,418,385	2.31%
Portfolio Company 14	First Lien Senior Secured Loans	12/31/2026	Fixed	Fixed	n/a	0.00%	13.00%	839,161	0.23%
Portfolio Company 15	First Lien Senior Secured Loans	3/2/2030	Floating	Prime	6.75%	5.25%	1.00%	7,249,922	1.99%
Portfolio Company 15	Warrants	n/a	n/a	n/a	n/a	n/a	n/a	254,709	0.07%
Portfolio Company 16	First Lien Senior Secured Loans	12/31/2026	Floating	Prime	8.50%	7.75%	n/a	7,149,328	1.96%
Portfolio Company 17	First Lien Senior Secured Loans	8/13/2030	Fixed	Fixed	n/a	12.50%	n/a	7,050,000	1.94%
Portfolio Company 18	First Lien Senior Secured Loans	7/22/2030	Floating	Prime	7.50%	2.50%	4.00%	5,811,365	1.60%
Portfolio Company 18	Warrants	n/a	n/a	n/a	n/a	n/a	n/a	243,000	0.07%
Portfolio Company 19	First Lien Senior Secured Loans	3/24/2028	Floating	Prime	7.75%	7.25%	n/a	6,047,090	1.66%
Portfolio Company 20	First Lien Senior Secured Loans	7/28/2028	Floating	SOFR	4.00%	10.25%	n/a	5,970,000	1.64%
Portfolio Company 21	First Lien Senior Secured Loans	3/30/2031	Floating	Prime	6.75%	3.25%	2.00%	3,573,174	0.98%
Portfolio Company 21	First Lien Senior Secured Loans	3/30/2031	Floating	Prime	6.75%	3.25%	2.00%	1,838,879	0.51%
Portfolio Company 22	First Lien Senior Secured Loans	4/30/2029	Floating	SOFR	4.25%	6.25%	1.50%	5,063,906	1.39%
Portfolio Company 22	Warrants	n/a	n/a	n/a	n/a	n/a	n/a	21,250	0.01%
Portfolio Company 23	First Lien Senior Secured Loans	6/17/2029	Floating	Prime	6.75%	5.25%	1.00%	4,759,771	1.31%
Portfolio Company 23	Warrants	n/a	n/a	n/a	n/a	n/a	n/a	191,648	0.05%
Portfolio Company 24	First Lien Senior Secured Loans	10/24/2029	Floating	SOFR	3.99%	8.00%	n/a	4,925,000	1.35%
Portfolio Company 24	Warrants	n/a	n/a	n/a	n/a	n/a	n/a	21,500	0.01%
Portfolio Company 25	First Lien Senior Secured Loans	7/31/2029	Floating	Prime	7.50%	6.50%	n/a	4,303,370	1.18%
Portfolio Company 26	First Lien Senior Secured Loans	3/31/2027	Floating	Prime	8.00%	7.50%	n/a	4,088,118	1.12%
Portfolio Company 27	First Lien Senior Secured Loans	9/22/2026	Floating	SOFR	3.75%	6.50%	n/a	518,931	0.14%
Portfolio Company 27	First Lien Senior Secured Loans	9/22/2026	Floating	SOFR	3.75%	6.50%	n/a	3,325,000	0.91%
Portfolio Company 28	Senior Secured Notes	7/16/2029	Fixed	Fixed	n/a	12.75%	n/a	3,430,000	0.94%
Portfolio Company 29	First Lien Senior Secured Loans	11/4/2028	Floating	Prime	8.00%	4.00%	4.50%	3,091,566	0.85%
Portfolio Company 30	First Lien Senior Secured Loans	3/13/2027	Fixed	Fixed	n/a	14.50%	n/a	3,000,643	0.82%
Portfolio Company 31	First Lien Senior Secured Loans	5/31/2029	Fixed	Fixed	n/a	6.00%	6.00%	2,040,519	0.56%
Portfolio Company 31	Preferred Stock	n/a	n/a	n/a	n/a	n/a	n/a	500,000	0.14%
Portfolio Company 31	Warrants	n/a	n/a	n/a	n/a	n/a	n/a	131,000	0.04%
Portfolio Company 31	Warrants	n/a	n/a	n/a	n/a	n/a	n/a	296,000	0.08%
Portfolio Company 32	First Lien Senior Secured Loans	12/10/2030	Floating	SOFR	3.25%	8.00%	n/a	2,922,813	0.80%
Portfolio Company 33	First Lien Senior Secured Loans	8/1/2028	Fixed	Fixed	n/a	12.75%	n/a	2,877,533	0.79%
Portfolio Company 34	First Lien Senior Secured Loans	6/6/2026	Fixed	Fixed	n/a	15.00%	n/a	2,765,000	0.76%
Portfolio Company 35	First Lien Senior Secured Loans	7/29/2026	Floating	Prime	7.00%	7.00%	2.00%	2,762,967	0.76%
Portfolio Company 36	Senior Secured Notes	11/29/2027	Fixed	Fixed	n/a	13.80%	5.00%	2,757,420	0.76%
Portfolio Company 37	First Lien Senior Secured Loans	12/3/2027	Fixed	Fixed	n/a	8.50%	n/a	2,669,064	0.73%
Portfolio Company 38	First Lien Senior Secured Loans	7/19/2027	Floating	Prime	8.50%	2.00%	1.50%	2,412,091	0.66%
Portfolio Company 39	Second Lien Senior Secured Loans	8/1/2028	Floating	Prime	7.75%	9.00%	3.50%	1,406,185	0.40%
Portfolio Company 40	Warrants	n/a	n/a	n/a	n/a	n/a	n/a	487,500	0.14%
<b>Total</b>								<b>\$ 363,966,713</b>	<b>100.00%</b>

# Investment Portfolio Highlights: Footnote Legend



Based on data as of 3/31/2026, unless otherwise noted. Weighted average amounts are weighted by the fair market value of each respective investment.

1. Weighted Average Portfolio Yield on Debt Investments (“Portfolio Yield”) is the weighted average of the annualized yield for each debt investment in the portfolio weighted by the fair value of each debt investment as of 3/31/2026. The yield for each debt investment is calculated by dividing (a) the sum of (i) the stated annual cash interest rate of the debt investment as of 3/31/2026, (ii) the stated annual payment-in-kind interest rate, if any, of the debt investment as of 3/31/2026, (iii) any additional recurring fees, (iv) the difference between the par value and the fair value of the debt investment, expressed as a percentage of the par value of the debt investment, and annualized based on the remaining term of the debt investment as of 3/31/2026, and (v) the exit fee of the debt investment, if any, expressed as a percentage of the par value of the debt investment and annualized based on the remaining term of the debt investment as of 3/31/2026, by (b) the fair value of the debt investment, expressed as a percentage of the par value of the debt investment. The Portfolio Yield calculation does not reflect any prepayment penalties or early payoffs with respect to the debt investments. The Portfolio Yield is gross of expenses and excludes cash and equity holdings. The Portfolio Yield would be lower if the calculation reflected expenses and cash holdings. The Portfolio Yield does not represent actual investment returns to the Company’s stockholders and the Company may not actually realize the foregoing yield of any specific debt investment, including if the remaining term of the debt investment is less than a year.

2. Represents the percentage of total annual interest expected to be received in kind instead of in cash. The Company has no PIK interest that was introduced post-origination that replaces previously required cash interest, typically due to amendments, covenant breaches, or restructurings.

3. Amounts were derived from the portfolio company financial statements used in connection with determining the investment valuations as of 3/31/2026, have not been independently verified by the Company, and may reflect a normalized or adjusted amount. Accordingly, the Company makes no representation or warranty in respect of this information.

4. Excluded from the data is information in respect of portfolio companies with negative or de minimis EBITDA, or where EBITDA may not be the appropriate measure of credit risk.